

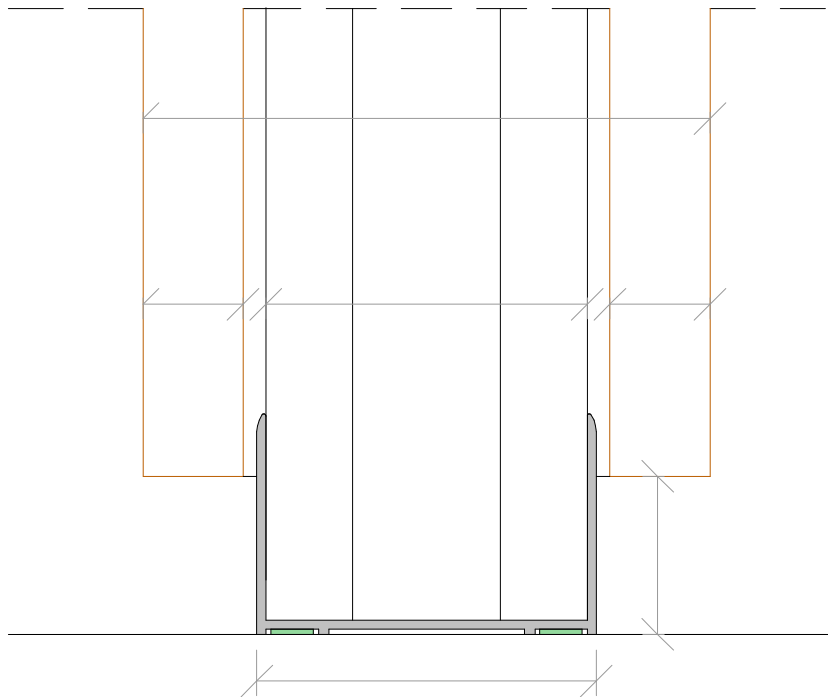
J'SOLID



**FULL PRIVACY,  
ENDLESS VARIETY.**

J'Solid goes beyond just replacing gypsum walls. Enjoy 100% modularity and great acoustics. Its versatile structure allows a wide range of finishings, making it the perfect solution for every room.

SOLID



BASIC INFORMATION

	J'Solid 19-19 mm (3/4" - 3/4")	J'Solid 19-19 mm (3/4" - 3/4")
Acoustic performance (Rw)	46 dB	53 dB
Rock Wool	40 kg/m <sup>3</sup>	75 kg/m <sup>3</sup>
Test report	015/2016-UAVE	014/2015-UAVE
Profile dimensions (w x h)	64 x 42 mm	64 x 42 mm
Weight/m <sup>2</sup>	38 kg	38 kg

TECHNICAL SPECIFICATIONS

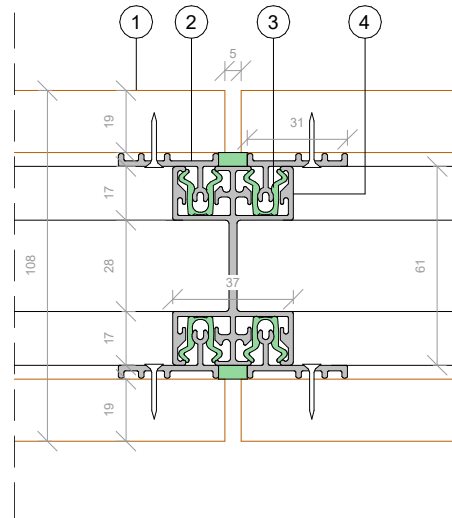
Structure	
Ceiling track	Aluminium extruded profile
Floor track	Aluminium extruded profile
Material	19 mm (3/4") MDF/chipboard panels
Joint type/width	PETG profile or polyplast 180° connection 2 or 3 mm (1/16" or 3/16")
Curved options	Galvanized steel tube for Keku-hanging system or JWS clip-and-fix profile

Wall details	
Profile finishings	Powder coating or anodization
Type of powder coating	Matte or gloss lacquer
Different panels	Possible in HPL, melamine or wood veneer
Tolerance	10 to 20 mm (3/8" to 13/16")
Wall thickness	108 mm (4 1/4")

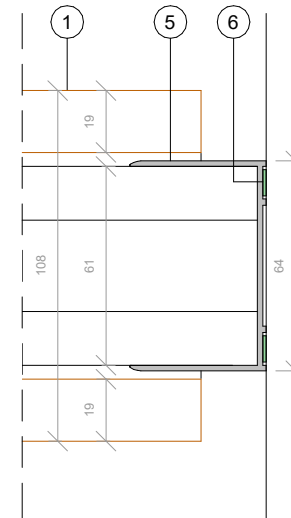
J'SOLID

E: 1/2

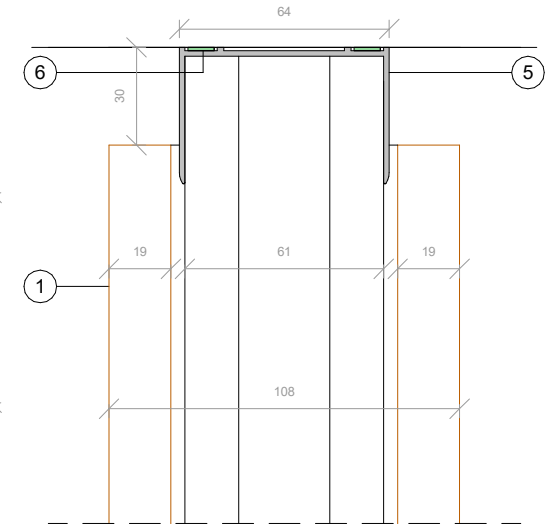
- 01 19 mm chipboard/MDF panel
- 02 Clipper
- 03 Nylon clip
- 04 Clipping profile
- 05 U profile
- 06 Acoustic foam



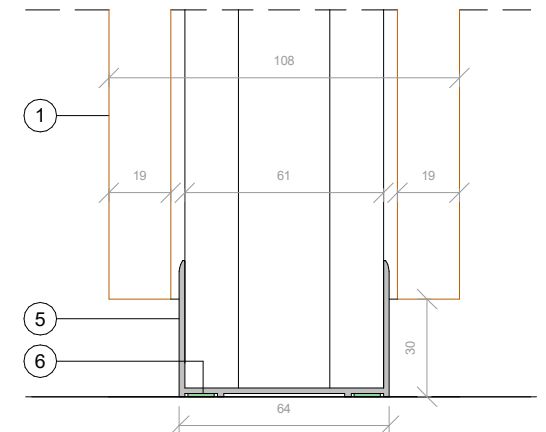
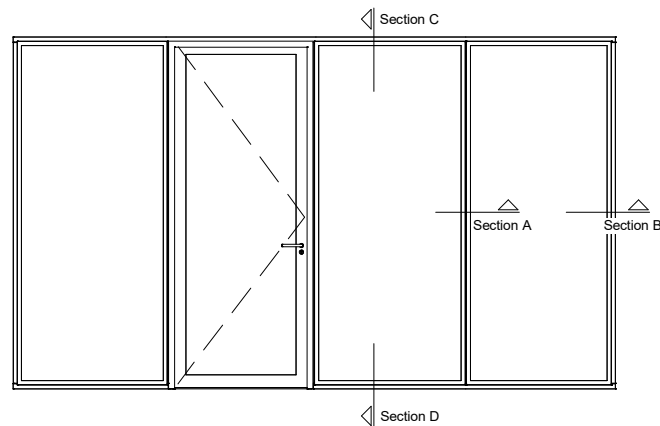
Section A



Section B



Section C



Section D

DOOR OPTIONS

DOOR	Acoustic value*	Possible?	Flush options?
J'Swing - Solid door 50 mm (2")	36 to 40 dB	✓	1 side
J'Swing - Solid door 53 mm (2 1/6")		✓	1 side
J'Swing - Frameless single glazed door		✓	✗
J'Swing - Framed single glazed door 50 mm (2")		✓	1 side
J'Swing - Double glazed door 50 mm (2")	36 dB	✓	1 side
J'Swing - Glass skin door 108 mm (4 1/4")	36 to 42 dB	✓	2 sided
J'Swing - Solid door 108 mm (4 1/4")		✓	2 sided
J'Slide - Framed single glazed door 50 mm (2")		✗	✗
J'Slide - Double glazed door 50 mm (2")		✗	✗
J'Slide - Solid door 50 mm (2")		✗	✗

\*The acoustic value is given when officially tested.



[WWW.JANSENWALLSOLUTIONS.COM](http://WWW.JANSENWALLSOLUTIONS.COM)



[INFO@JANSENWALLSOLUTIONS.COM](mailto:INFO@JANSENWALLSOLUTIONS.COM)



BE +32 11 79 92 00

PT +351 210 987 486